

## **JFBM Battery Monitor GSM Communicator**

The Battery Monitor JFBM has been designed to monitor 3 different battery voltages with settable upper and lower limits.

The JFBM operates on 10 to 16 VDC and this is the first input that is monitored and normally set

For a low battery on 10.7 vdc and 12.5 Battery OK.

The 2 other inputs can be set to monitor any voltages from 2 to 70 vdc.

E.G.

24.0 and 27.0 for the 24 volt input. Settable between 1 and 70 VDC

48.0 and 57.0 for the 48 volt input. Settable between 1 and 70 VDC

In Addition to the inputs the JFBM has 1 x 10 Amp relay output that can be controlled by SMS, Drop Call and Timers.

Messages from the inputs can also be routed back to the JFBM to operate the relay.

E.G On a battery low the message can be routed back to the JFBM to operate the relay for a charger etc.

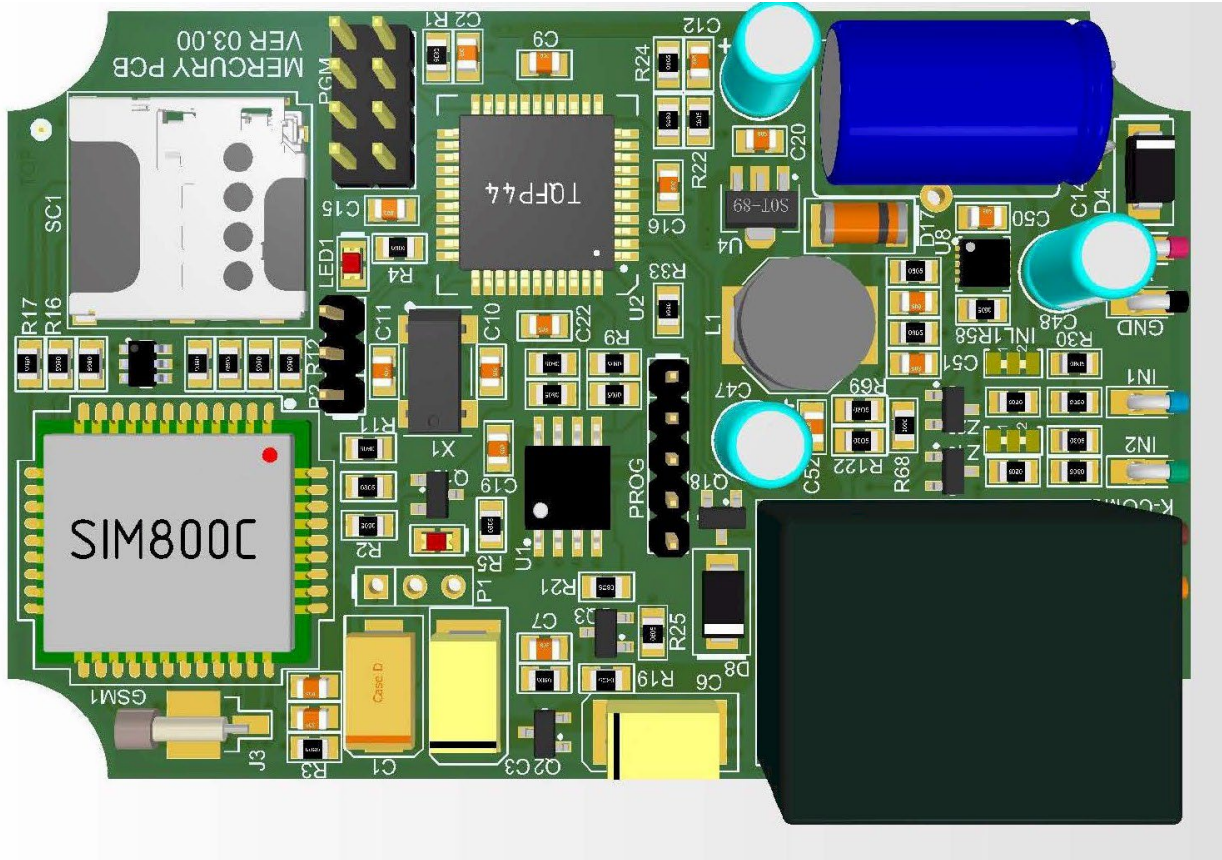
Similarly the Battery ok can switch off the charger.

### **Features:**

- SMS to up to 7 numbers. GPRS To report to Control rooms.
- The Inputs can send two messages one for High and one for Low.
- The Inputs have a debounce time of 15 seconds.
- Output 1 when activated has programmable messages for on / off and pulse.
- Output can be programmed to switch On / Off or Pulse at various times of the day.
- Output pulse time length can be set.
- All functions can be controlled by SMS as well as the timers.
- All Voltages can also be requested by SMS.
- Status Of Inputs and Output can be requested by SMS.
- Fully programmable over the air via SMS or from computer via EEPROM programmer.
- Free Programming Assistance.
- SIZE = 90mm x 65mm x 30mm

The JFBM can operate on Pre Paid or Contract SIM cards and when used on Pre Paid will SMS balance daily or can be set to SMS balances every from 1 to 30 days.

If Contract SIM is used the JFBM will SMS a Health Test also settable from every 1 to 30 days.



### Examples of Messages.

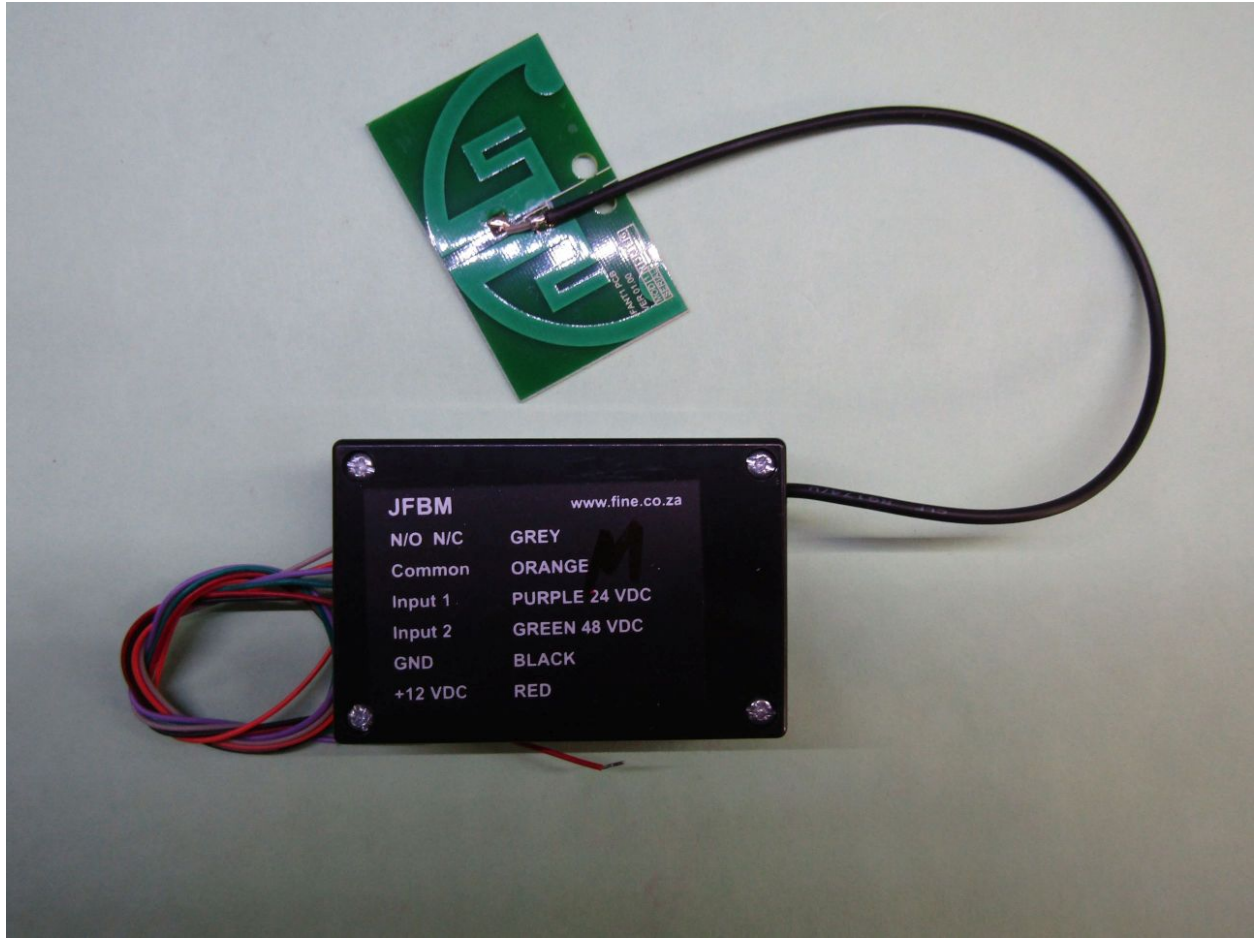
48 V Battery Below 48.4 V At Battery Monitor. ( Input )

Victron Assist On At Battery Monitor. ( Relay Output )

48 V Battery Above 57.0 V At Battery Monitor. ( Input )

Victron Assist Off At Battery Monitor. ( Relay Output )

#U Air Time: Airtime is R0.08; data is 0.00 MB; Night Owl 0.00 MB; 174 SMS's; ( Health Test )



[www.fine.co.za](http://www.fine.co.za)